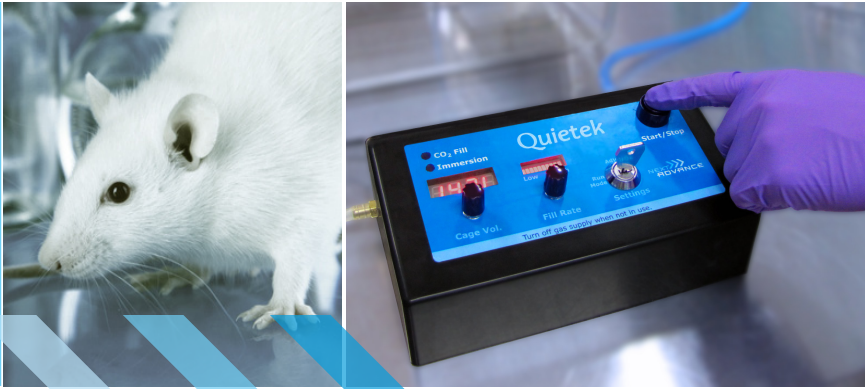


*Humanely euthanize  
your laboratory rodents  
while adhering to AVMA  
guidelines*



## Quietek™

### Automated Euthanization Device Ensures AVMA Compliance

#### KEY BENEFITS

##### ► EASY COMPLIANCE

The Quietek seamlessly integrates into your existing workflow with no additional training required.

##### ► PREVENTS ERRORS

The recommended gas rate is administered appropriately, every time. Use the key lock to prevent settings from being changed.

##### ► CONSISTENT

The Quietek eliminates variation in CO<sub>2</sub> induction conditions which can change tissue characteristics. A run timer allows you to document conditions for each animal.

##### ► HUMANE

Fully adjustable within recommended parameters to ensure that ethical standards are maintained.

Now you can ensure that your laboratory rodents are humanely euthanized without disrupting your laboratory workflow. Introducing the Quietek, the only affordable, fully-automated device specifically designed to comply with 2013 AVMA guidelines.

#### Adheres to Stringent New Guidelines

The new 2013 AVMA Guidelines for Euthanasia of Animals state that the flow rate for lab rodent CO<sub>2</sub> euthanasia systems should displace 10% to 30% of the chamber or cage volume/min. Prefilled chambers are now unacceptable. The NIH requires all new research plans and renewals to be evaluated using these guidelines.

#### Takes the Guesswork Out of Euthanasia

Designed by animal research facility managers and scientists, this easy to use, accurate system ensures that you correctly administer CO<sub>2</sub> by automatically calculating gas delivery for your cage volume and desired fill rate. CO<sub>2</sub> conditions will be consistent every time, thereby eliminating a source of variation.

#### Fail-Safe and Easy to Operate

All you need to do is push the start button. There are no valves to turn (or accidentally leave open) between runs and no regulators to adjust. Ideal for the inexperienced, sleep deprived, or overworked laboratory technician. The Quietek also features a key lock that prevents unwanted or accidental tampering with the settings.

#### Reduces Impact on Your Lab

The Quietek seamlessly integrates into your current protocols. Use it with most common chambers or cages. Lids are available in several sizes.

## FEATURES

- ▶ Gas flow rate calculated automatically for your cage size
- ▶ Key lockout prevents unauthorized tampering with controls
- ▶ Consistent gas delivery
- ▶ Run timer for ease of documentation
- ▶ Works with common rodent chambers or cages
- ▶ Lids available in several sizes
- ▶ Made in the USA

## New AVMA Guidelines for Euthanasia are Out. Are You Ready?\*

**“An optimal flow rate for CO<sub>2</sub> euthanasia systems should displace 10% to 30% of the chamber or cage volume/min. Prefilled chambers are unacceptable.”**

AMERICAN VETERINARY MEDICAL ASSOCIATION (2013) AVMA GUIDELINES FOR THE EUTHANASIA OF ANIMALS: 2013 EDITION, PG. 49

The AVMA Guidelines can be found here:

<https://www.avma.org/KB/Policies/Documents/euthanasia.pdf>

\*Applicable to mice, rats, hamsters, guinea pigs, gerbils, degus and cotton rats

## Quietek Models

Feature	Quietek 1	Quietek 2	Quietek Lepus
One-touch operation- Just press "Start" Button	✓	✓	✓
Key lockout to prevent tampering with controls	✓	✓	✓
Fully adjustable within 10-30% chamber volume/min.	✓	✓	
For the euthanasia of mice, rats, hamsters, guinea pigs, gerbils, degus and cotton rats	✓	✓	
For the euthanasia of rabbits			✓
Dual settings for two different cage or chamber volumes	✓	✓	
Number of CO <sub>2</sub> outlets / cages at a time	1	2	1



## For Information Contact:

[www.nextadvance.com](http://www.nextadvance.com)

**biostep**<sup>®</sup>

**Ihr Spezialist für  
PCR, Elektrophorese & Bio-Imaging**

Biostep GmbH  
Meinersdorfer Str. 47A  
09387 Jahnsdorf

Telefon +49-3721/ 39 05-0 Fax +49-3721/ 39 05-28  
info@biostep.de info@techne.de  
www.biostep.de www.techne.de